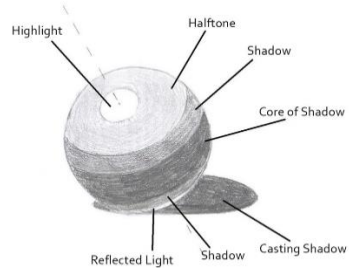
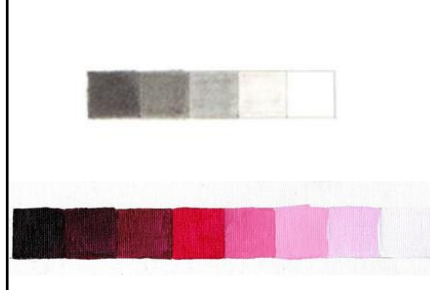


Year 4 Art: Elements of Art: Light

Tone and Light



Value Grids



Keywords

Tone – the light and dark values used to make a realistic object

Value – light, dark and shades in between that make up objects

Form – the element of shape

Chiaroscuro – describes the dramatic contrast of light and shadow in an image

Ground – (short for 'background') the very first layer of paint applied to an artwork

Representing Light in Portraiture



Girl with the Pearl Earring (1665)

Johannes Vermeer



Self Portrait (1911+)

Stanley Spencer



Old Man aged 93 (1521)

Albrecht Dürer

Representing Tone and light



Seated by with a Straw Hat (1883)

Georges Seurat



Guernica (1937)

Pablo Picasso

Representing Light in Still Life



Basket of Fruit (1595 – 1596)

Michelangelo Merisi da Caravaggio



Quince, Cabbage, Melon and Cucumber (1602)

Juan Sanchez Cotan