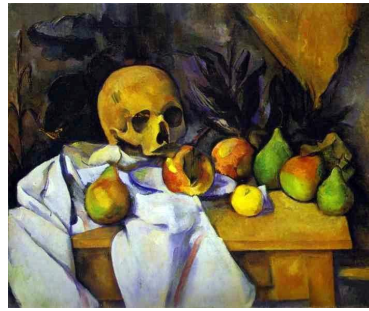


Paul Cezanne



Still Life with water jug
1892-93



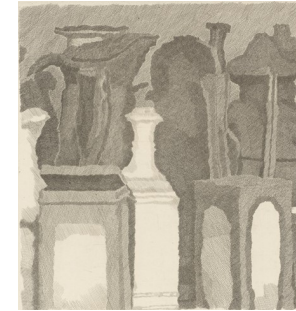
Still Life with Skull
1896-98



What is a still life?

A 'still life' is a work of art demonstrating mostly everyday items which are either natural/organic objects or man-made items like glassware. They are usually arranged on a table.

Giorgio Morandi



Still life with very
fine hatching 1933

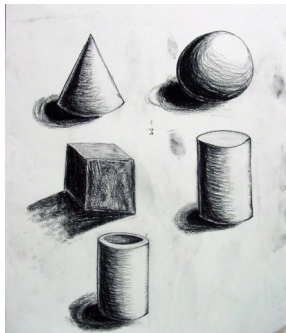


Still Life
1946



Form

The height, width and depth of a work of art. It is about how an object occupies a space.



Shapes



Circle



Square



Triangle

Forms



Sphere



Cube



Pyramid

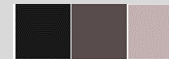


Cone

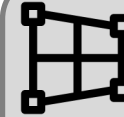
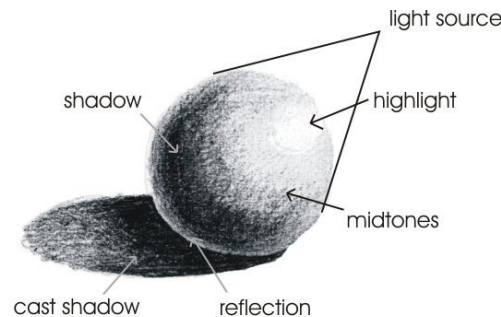


Cylinder

Tone/Value



When we talk about the tone of a colour, we are observing the strength of that colour. Value is about colours next to each other in a composition and how much light or darkness we can see between each colour.



Perspective

Perspective is important in making a 2D object appear 3D on the page. It involves thinking about the depth and spatial relationship of objects. You can also draw or photograph objects from many different perspectives. Using different angles will change how your artwork looks.

